



Humanitarian
OpenStreetMap
Team



LIVING STRATEGY

An Adaptive Strategy For A Changing World



A person is walking away from the camera on a dirt path in a rural setting. They are wearing a white t-shirt and a green and yellow patterned shawl. The path is surrounded by tall grass and trees. In the background, other people can be seen walking further down the path. The sky is blue with some clouds.

AN UNPREDICTABLE WORLD

Over the past decade, the world has faced profound and unexpected changes, reshaping the way we live, work, and respond to crises.

From the escalating impacts of climate change on human health and livelihoods to the global disruptions brought on by the pandemic and ongoing conflicts, these challenges have exposed deep inequalities and amplified the needs of communities living in crisis.

At HOT, we are finding solutions to these unpredictable crises. We believe the answer lies in collaboration, innovation, and a commitment to work with local communities. Through our living strategy, we attempt to ensure that mapping efforts remain impactful, inclusive, and resilient, and leaves no one behind either now or in the future.



Humanitarian
OpenStreetMap
Team

"PARTS OF OUR STRATEGY ARE MORE LIVING THAN OTHERS"

At HOT, our commitment to open mapping as a tool for addressing humanitarian and development challenges drives everything we do.

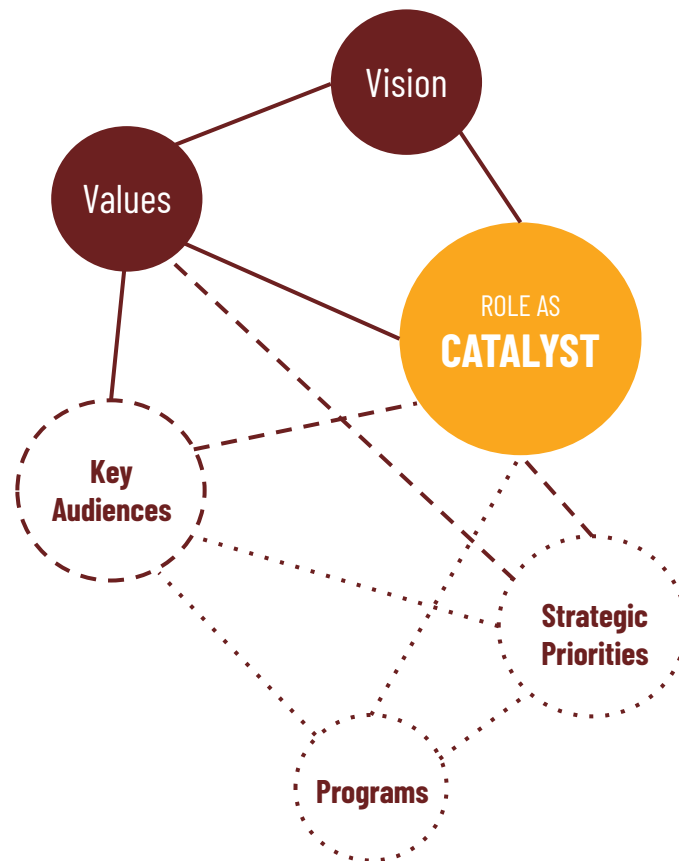
Our Living Strategy—an agile and responsive framework, enables us to remain effective and relevant in a rapidly changing world.

HOT's vision, values and future role as a Catalyst will remain fixed.

As a Catalyst, HOT is dedicated to amplifying the voices, efforts, and aspirations of the people and communities at the heart of the challenges.

The living elements of our strategy are reflected in our key audiences, strategic priorities and programs.

These components are designed to evolve, ensuring that our approach remains relevant, effective, and deeply connected to the people we serve.





LOCALIZED EFFORTS

People and communities are at the heart of our strategy. HOT believes that solutions to the world's biggest challenges can and must center the voices of citizens and community groups working in close proximity to the local impacts of global challenges.



HOT Envisions A World In Which...

Community needs are addressed through mapping

Everyone can access and contribute to the map

Open map data is available and used for impact





OUR VALUES

HOT's values guide our vision, our ways of working and ways in which we build and invest in relationships with communities, partners and beyond.



Put People First

Being proximate to people, place, problems

Listening first & adapting to context

Seeking informed consent & shared decision-making



Work in the Open

Supporting an open & accessible community

Contributing to, and building on, open knowledge

Catalyzing change through open data & technology

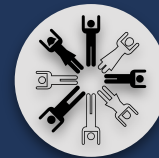


Collaborate for Impact

Acting in solidarity

Enabling participation

Investing in the strength of the network



Build for Inclusivity

Designing for access and utility

Breaking down language & resource barriers

Prioritizing marginalized voices

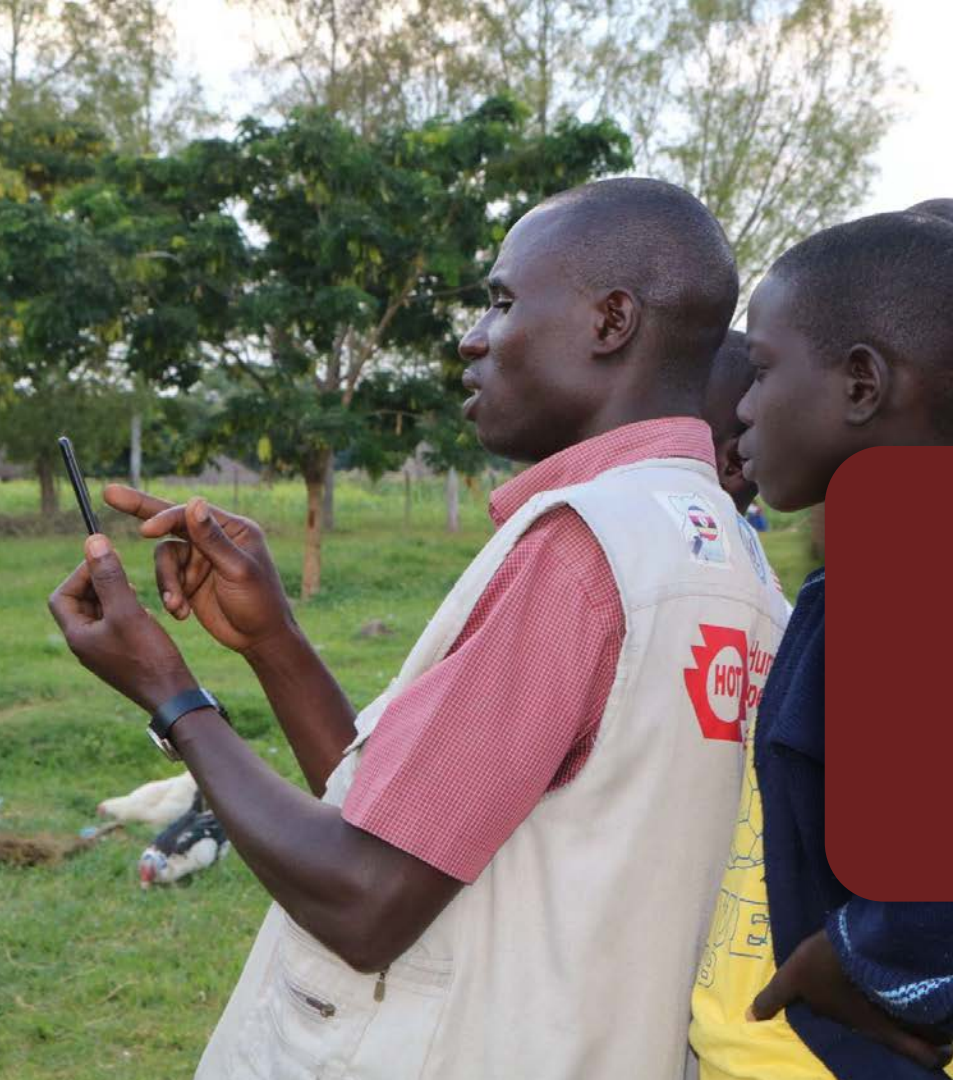
Community needs are addressed through mapping

Open mapping is used as a tool to identify, understand, and respond to the specific challenges and priorities of the communities.

Local capacity and knowledge are prioritized to ensure community needs are addressed.

Centering the voice and participation of people for making informed, data-driven decisions to address the needs of local people.





Everyone can **access**, and **contribute** to, the map

Open tools must have a low barrier to entry to make this possible

Open knowledge must exist to share learning and knowledge across networks

Communities and individuals receive training and support to enable and strengthen their contributions

Open map data is **available** and **used for impact**

Map data is freely accessible and is actively leveraged by communities to create positive change in communities.

Open map data is typically contributed by volunteers, organizations, and local communities, and is available on platforms like OpenStreetMap.

Map data is applied to solve real-world challenges, such as improving disaster response, addressing climate change, or supporting humanitarian relief efforts.



HOT's Role as a Catalyst

HOT believes that a globally interconnected network of local communities are at the heart of local challenges, living and breathing the daily problems, capable of identifying opportunities.

To amplify and accelerate the existing efforts of communities responding to complex challenges, HOT will invest in and deliver high-quality, community-centered mapping programs across HOT's priority regions, that feature:

1

Adaptive granting and funding opportunities across varying levels of partner maturity and experience

2

Extensive network support through peer to peer learning and knowledge sharing

3

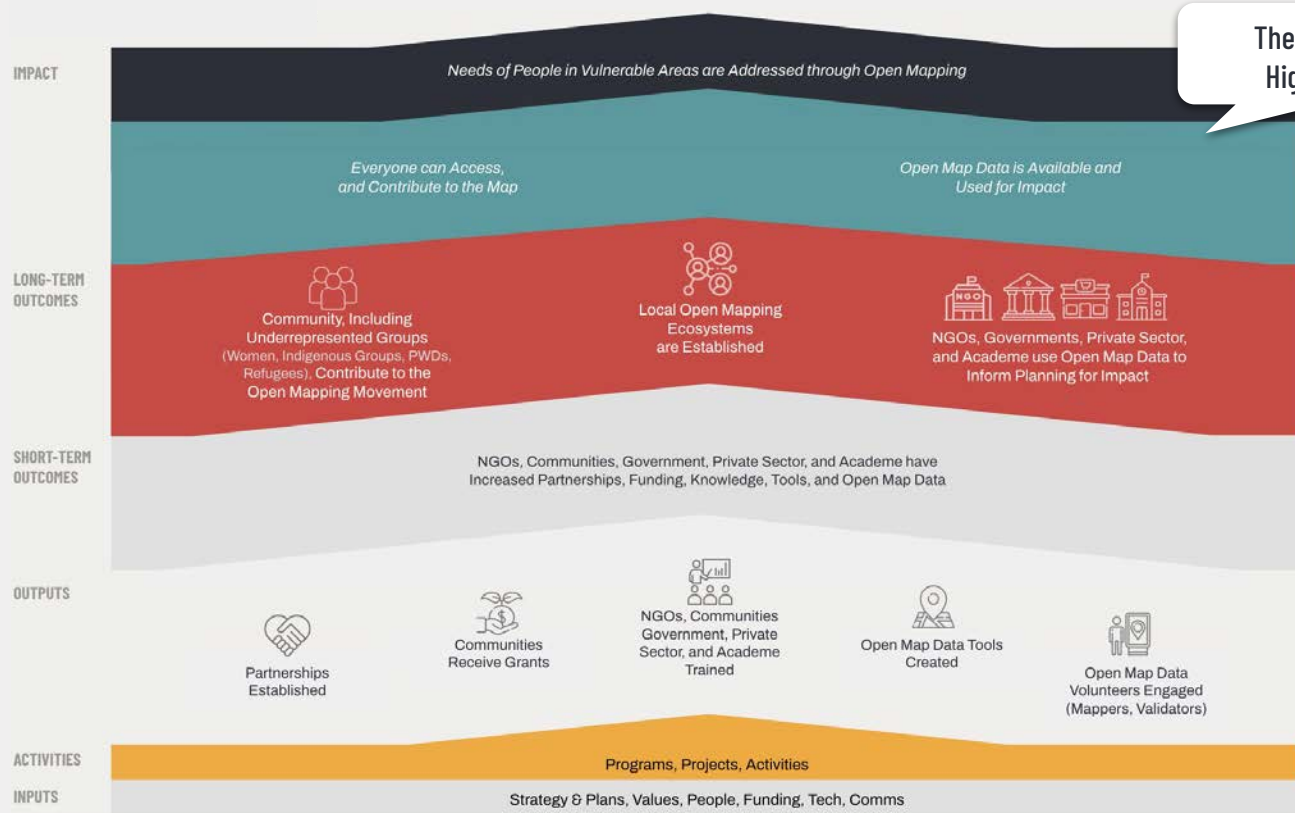
Hands-on strategic and implementation support to people, communities and partners to generate and use open map data in their efforts

4

Fit for purpose technology and tools that enable people to easily map & contribute to OpenStreetMap

Theory of Change

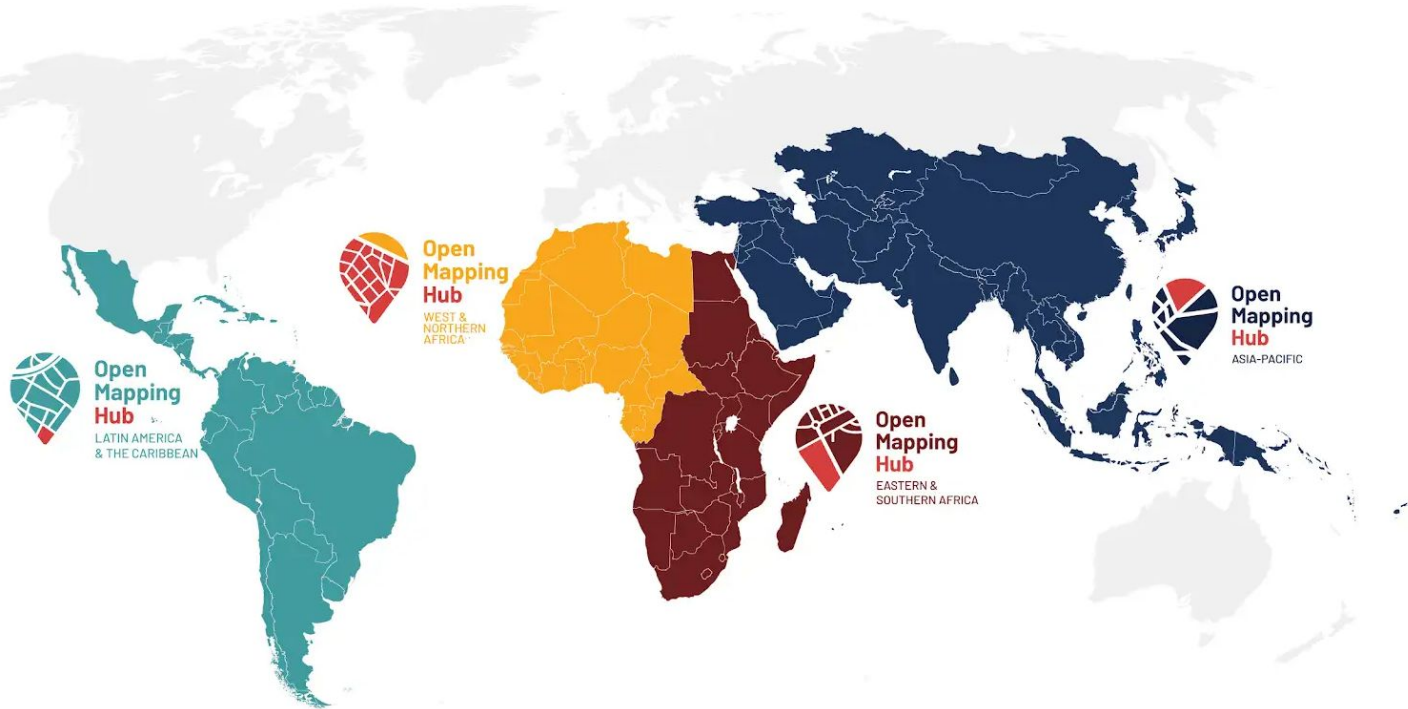
HOT's Theory of Change describes the long-term change we want to effect in the world. The outputs represent short-term changes and benefits of our activities, whereas the outcomes represent the longer-term changes and HOT's ideal end state.



Theory of Change
Highlights 2024

Priority Geographies

HOT's work is localized through our Open Mapping Hubs, whose regional coverage is represented below. The regions identified on this map are a broad representation of our work, but not a commitment to each country at this time.



Who We Serve

As a catalyst, open, and community-driven organization, HOT creates impact by collaborating directly with diverse groups and individuals, especially the most vulnerable and underserved communities. We understand that a map alone cannot transform lives—it's the process of creating and utilizing the map that truly empowers change.

To drive this mission, HOT's open mapping community comprises three interconnected groups as below:

Mappers



Individuals and groups who contribute open map data

Map Users



People or organizations who use maps for positive social impact or change

Map Supporters



Individuals, org. and groups who offer money, time, expertise or technology to support HOT's vision

Youth, as the leaders of tomorrow, play a pivotal role in ensuring that map data is up-to-date, accurate, trusted and used by decision-makers. HOT has a special focus on actively engaging youth in open mapping efforts to empower the next generation of humanitarians.

Strategic Priorities

Over the next three years, HOT will focus on two key strategic domains to maximize our impact and support our global communities:

Disaster management and humanitarian response

Advance disaster preparedness, response, & recovery by combining open AI models with crowdsourcing to provide accurate, up-to-date data for pre- and post-disaster needs. Collaborating with humanitarian and tech partners, HOT will develop high-quality datasets for complex emergencies, while integrating open mapping tools into partner workflows for interoperable action.

Locally-led climate action

Open mapping drives locally-led climate adaptation by empowering communities and networks to lead, advocate, and scale efforts through peer support and high-quality evidence in vulnerable areas across all priority regions. It fosters innovative applications to protect vital ecosystems, enabling nature-based solutions and sustainable funding strategies.

Strategy



Approach

An effective, accessible and just **end-to-end open mapping toolchain**

Uptake of open mapping powered by **evidence generation**, storytelling and awareness raising

Tangible impact on local problems through **open mapping projects** that build community capacity and agency

Open mapping contributions optimised through **localised AI models**

Humanitarian OpenStreetMap Team is an international non-profit dedicated to improving lives through accurate and accessible geographic data. We work together to provide map data that revolutionizes disaster management, reduces risks, and contributes to achieving the Sustainable Development Goals.

Working across four regions with local communities, governments, and organizations, Humanitarian OpenStreetMap Team supports long-term development projects, and provides critical map data for informed decision-making that improve the lives of millions, ensuring that no one is left behind.



Humanitarian
OpenStreetMap
Team

hotosm.org